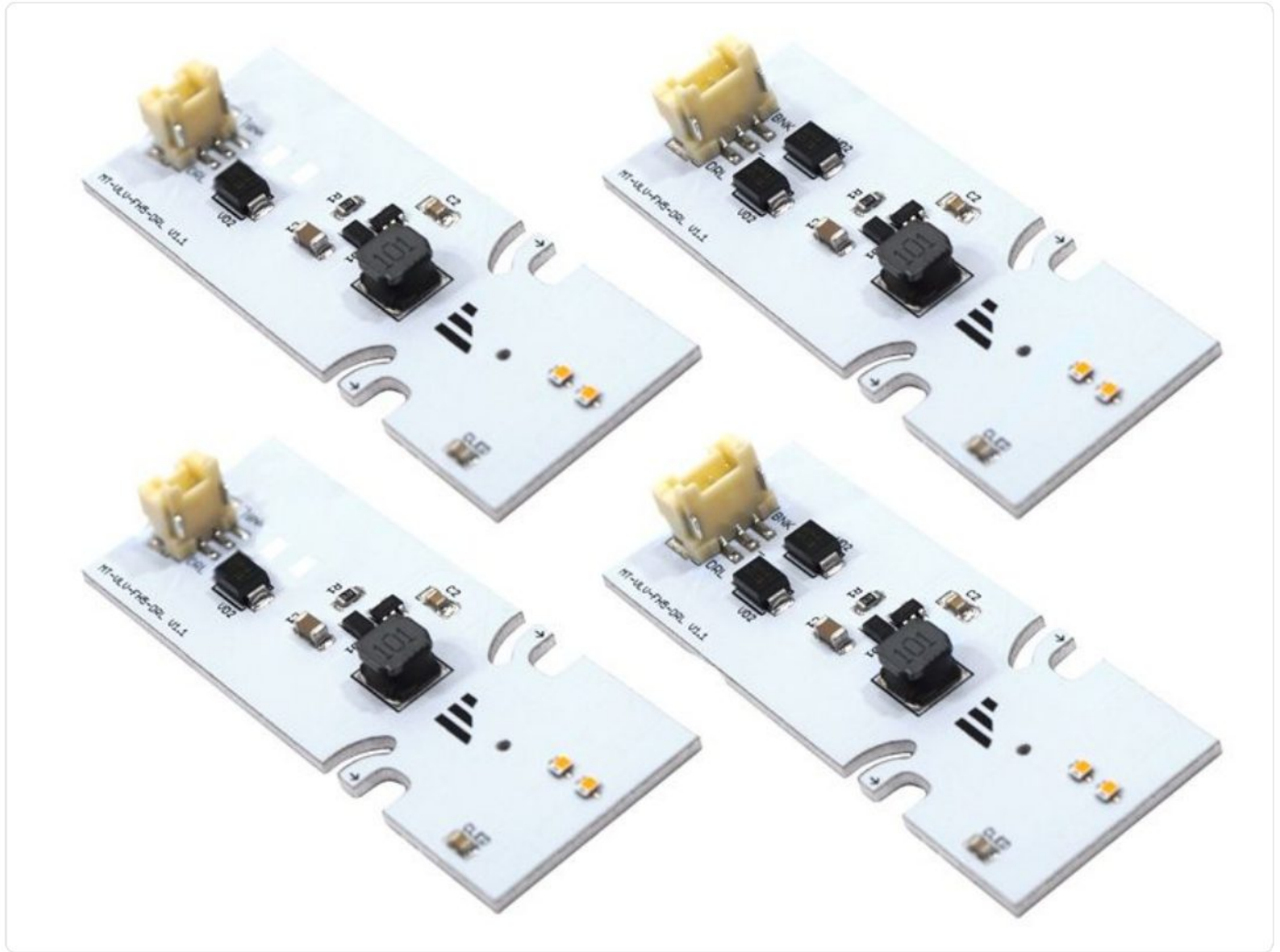


LED DRL conversion kit for Volvo FH5 / FM5 / AERO 2021+

Article number (SKU): 240805

Dual Color amber / white (2700K/6000K) + strobe



Product description

Complete set of LED emitters to retrofit your Volvo FH5, FM5 or AERO with amber daytime running lights (DRL), or simply to replace your emitters if one of the originals breaks. These fit the Volvo FH5, FM5 and AERO from 2021 onwards. In total the set contains 8 high-power LEDs per set, with an output equivalent to the original.

Fits both LED and halogen headlights.

The emitters are designed for optimal durability: the powerful high-power LEDs are placed on aluminium PCBs, whereas the original uses standard PCBs. The aluminium increases heat transfer to the heat sinks and ensures the maximum lifespan of the LEDs. The original connectors are used on all emitters, so connecting them is straightforward.

Note: the emitters are not e-approved.

Each set contains four emitters and thermal paste for mounting. There are two emitters for each side.



Amber DRL – close-up



Mounted on the Volvo FH5



Volvo FH5 / AERO LED conversion kit

Dual Color

The Dual Color kit makes it possible to switch between white and yellow DRL. 6 DIP switches let you adjust how the different functions operate. Note especially DIP5, which lets you choose the colour temperature of the white light – warm white 2700K or xenon white 6000K. The dual color strobe always stays yellow and 6000K regardless of the setting.

The kit consists of 2 controllers, 4 emitters and cables to connect everything.

Switch	Function
DIP 1 + DIP 2	Strobe mode (4 modes in total)
DIP 3	Split strobe (both stripes strobe simultaneously or split)
DIP 4	Dual color strobe (strobe both white and yellow)
DIP 5	Warm white DRL instead of xenon white
DIP 6	Indicator mode (only the bottom stripe or both stripes)

Manual – Overview

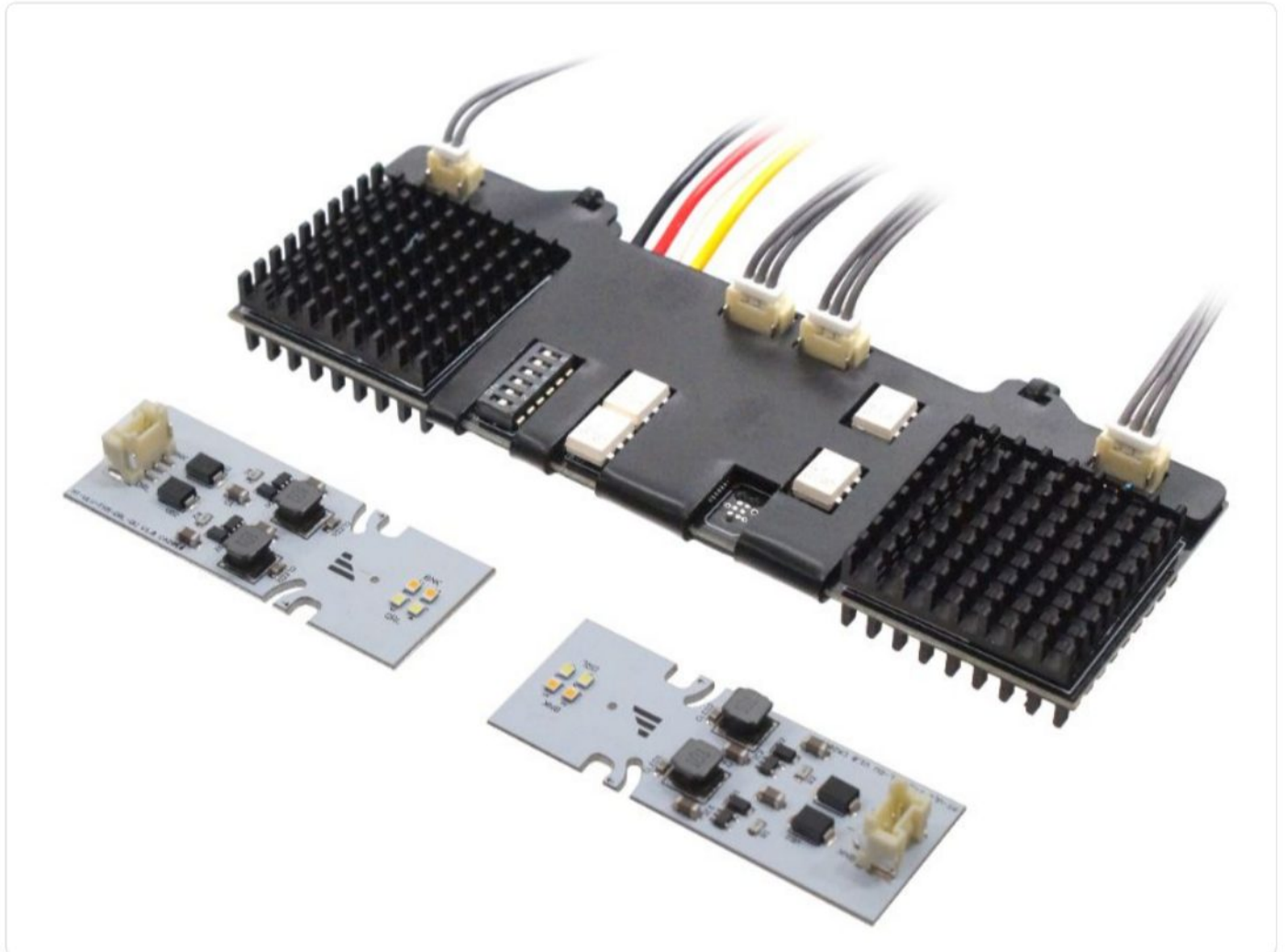
Kit that makes it easy to change the colours of the DRL in the headlights of the Volvo FH 2021+.

The controllers each control two emitters. To avoid bulb check errors, the original connectors are connected to the controllers, working as cheat / canbus resistors. The controller also uses this to read whether the headlight is running at high or low brightness, and whether the headlight is indicating.

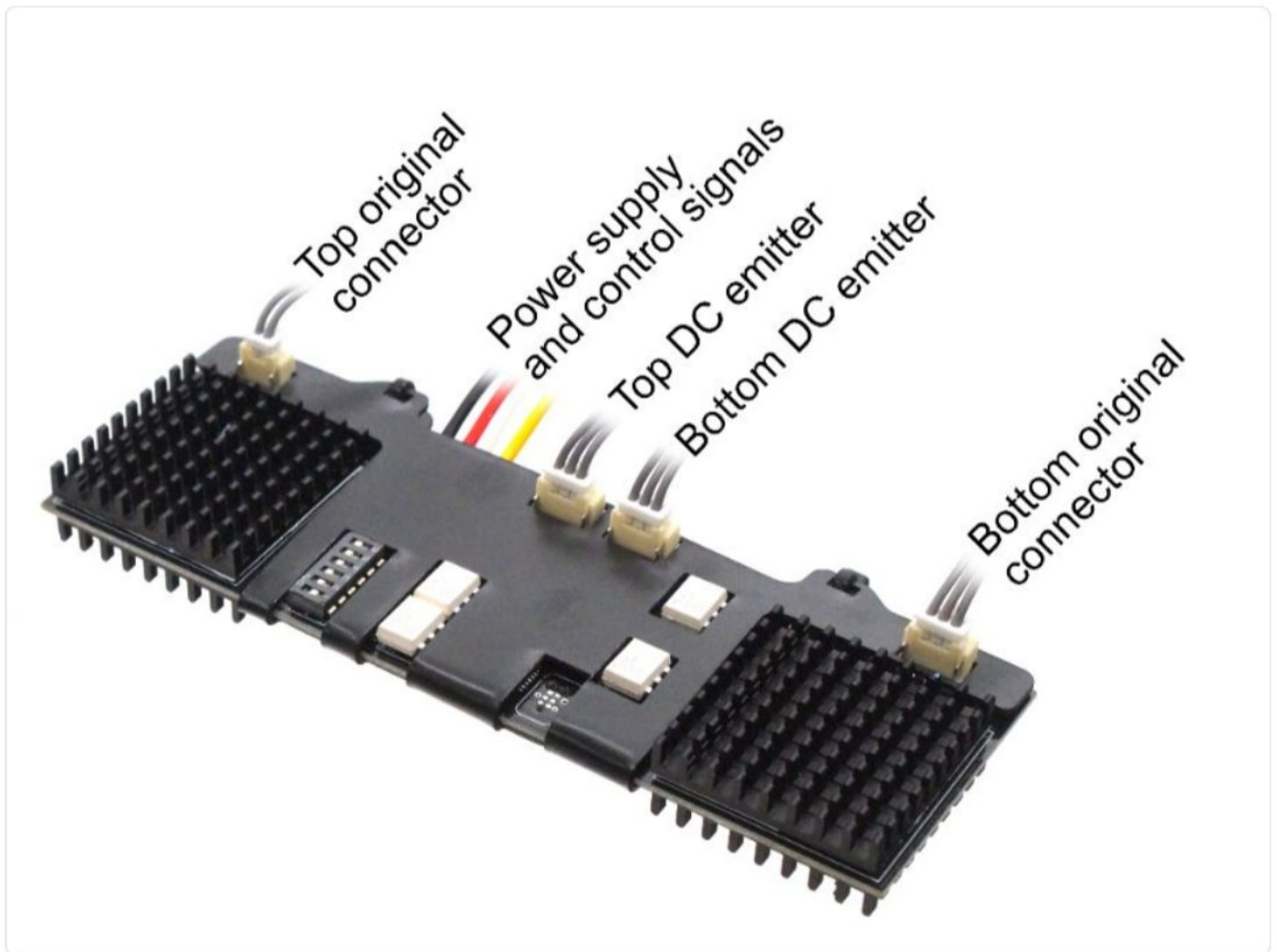
Contents

The kit includes parts for both headlights:

- 4 dual color emitters
- 8 cables (4 x male-female, 4 x female-female)
- 2 controllers
- Thermal paste for the emitters



Contents of the set



Parts overview

Mounting

Mounting the dual color emitters and their controller is done through the backside of the headlight.

Note: the connectors and cables used are somewhat fragile and cannot handle hard pulls. You risk breaking the connectors, which will then have to be repaired.



Backside of the headlight

1. You do not have to remove the headlight completely, but you will have to tilt the cabin all the way over. Remove the large plastic shield and the two aluminium heat sinks where the emitters are placed. Disconnect the connectors from the emitters.



Remove the plastic shield and the heat sinks

2. The original emitters are removed from the heat sinks and the new ones are mounted. Remember the thermal paste. Note the arrows where you can bend the wings so that they clamp onto the taps of the heat sink.

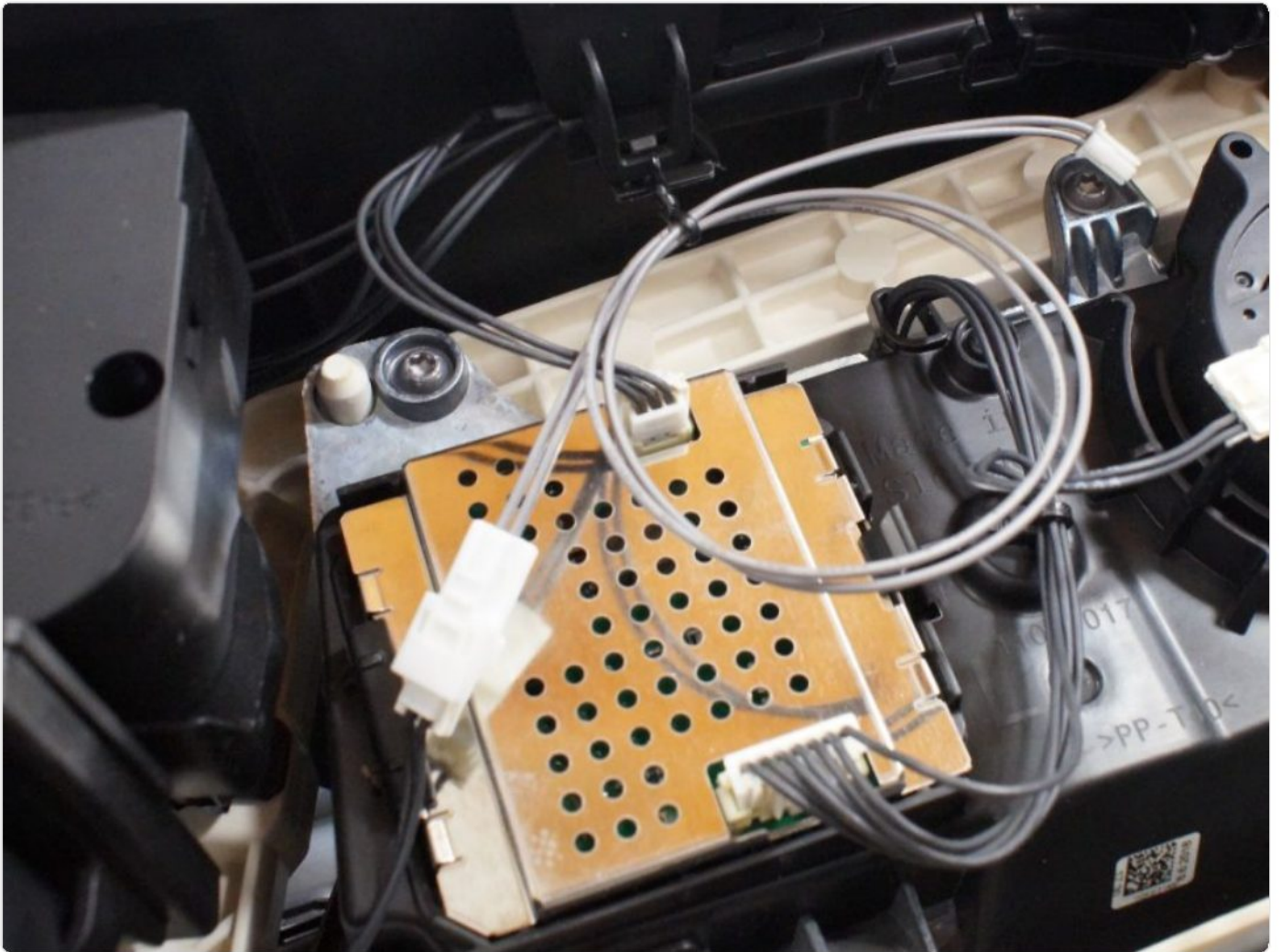


Emitter on the heat sink – bend the wings at the arrows

3. The large white male connectors that are included must be connected to the cables where the original emitters were connected. Note that one is 2-wire, the other is 3-wire. The cables and connectors must be fed backwards into the headlight; this is done most easily by pushing the cables in a little and catching them on the backside with fingers or pliers.





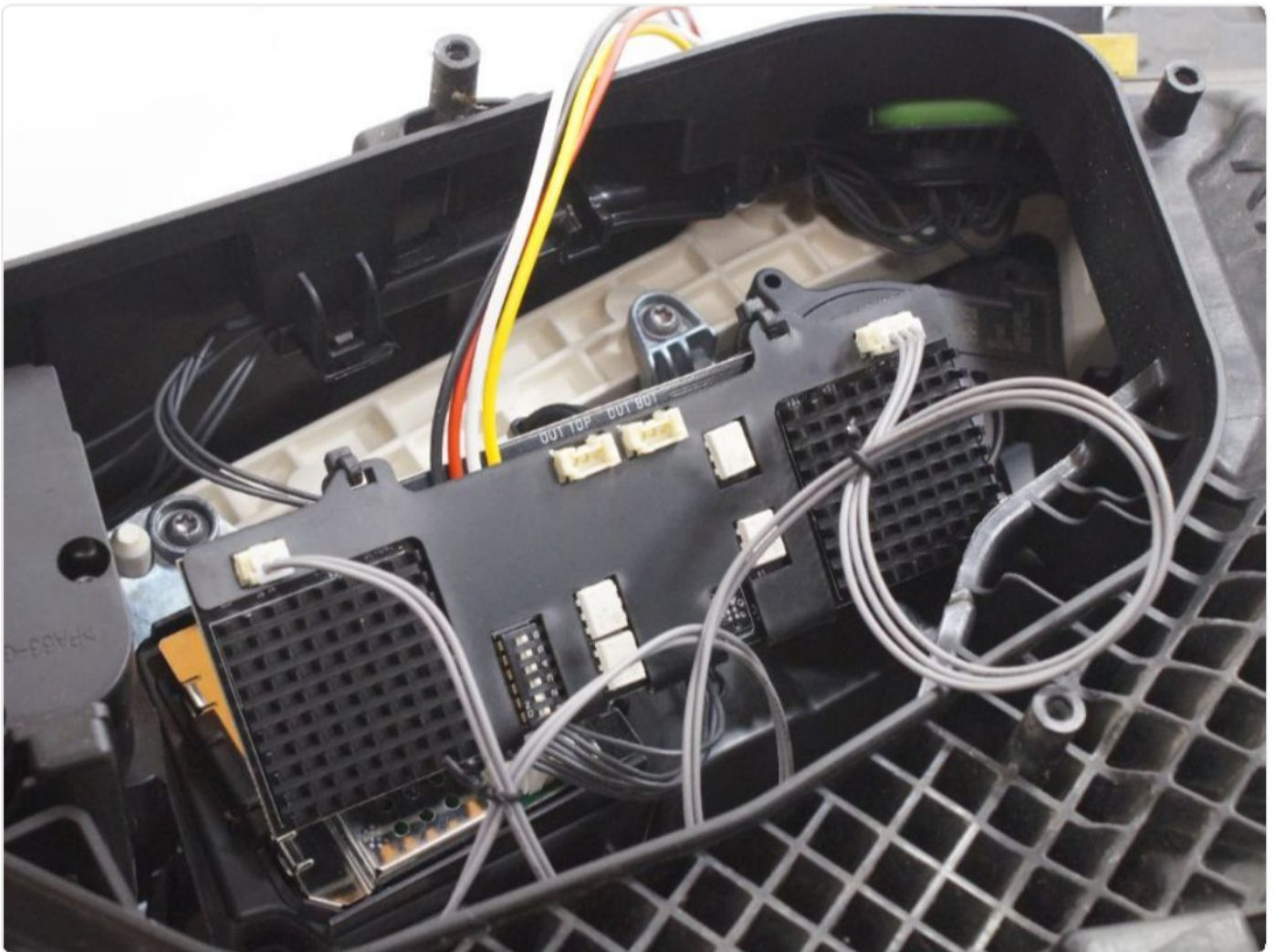


Do this on both sides.



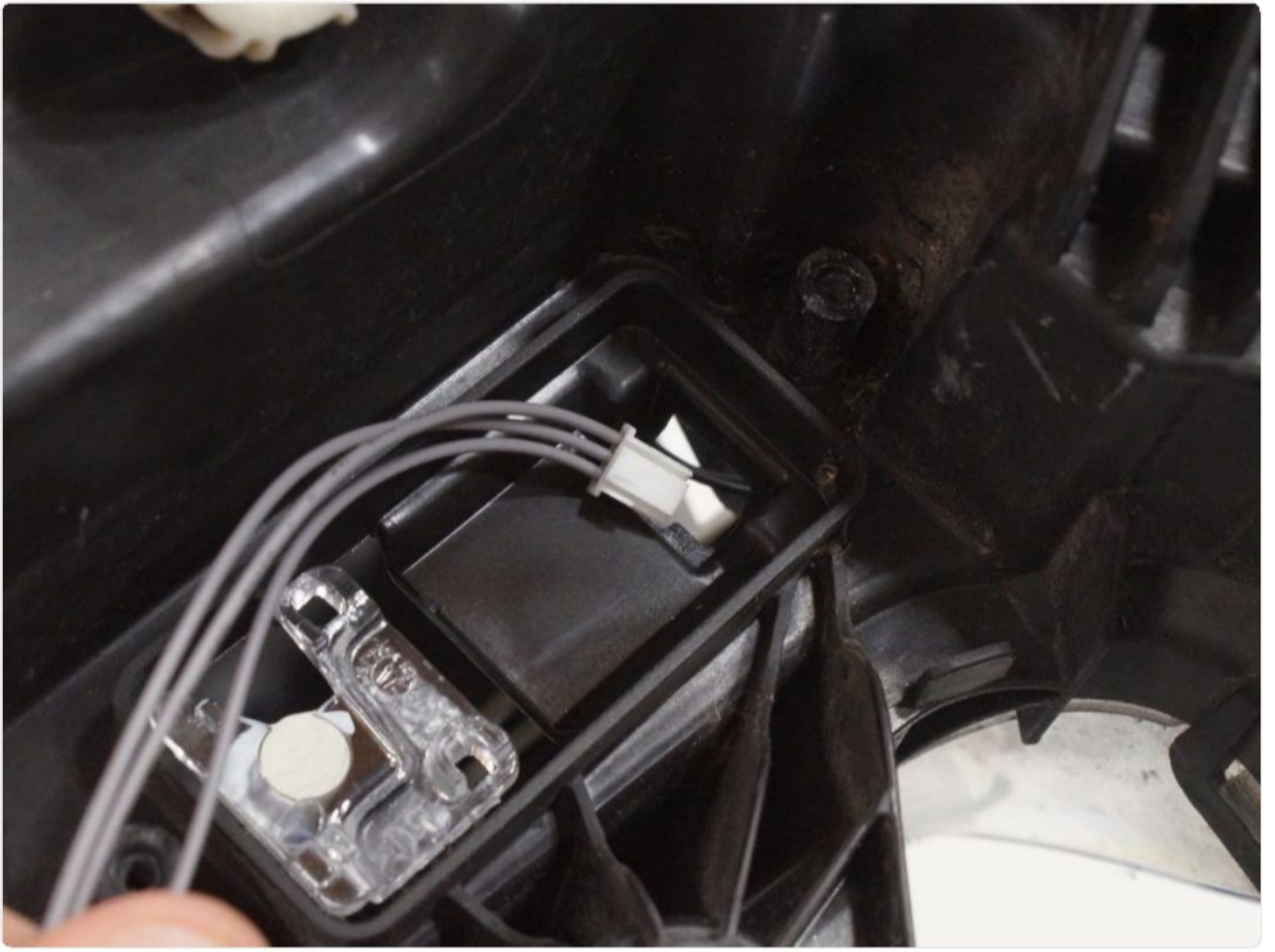
Perform on both sides

4. The two cables are connected to the outer connectors on the controller. Again note that there are two different connectors: 2-wire and 3-wire.



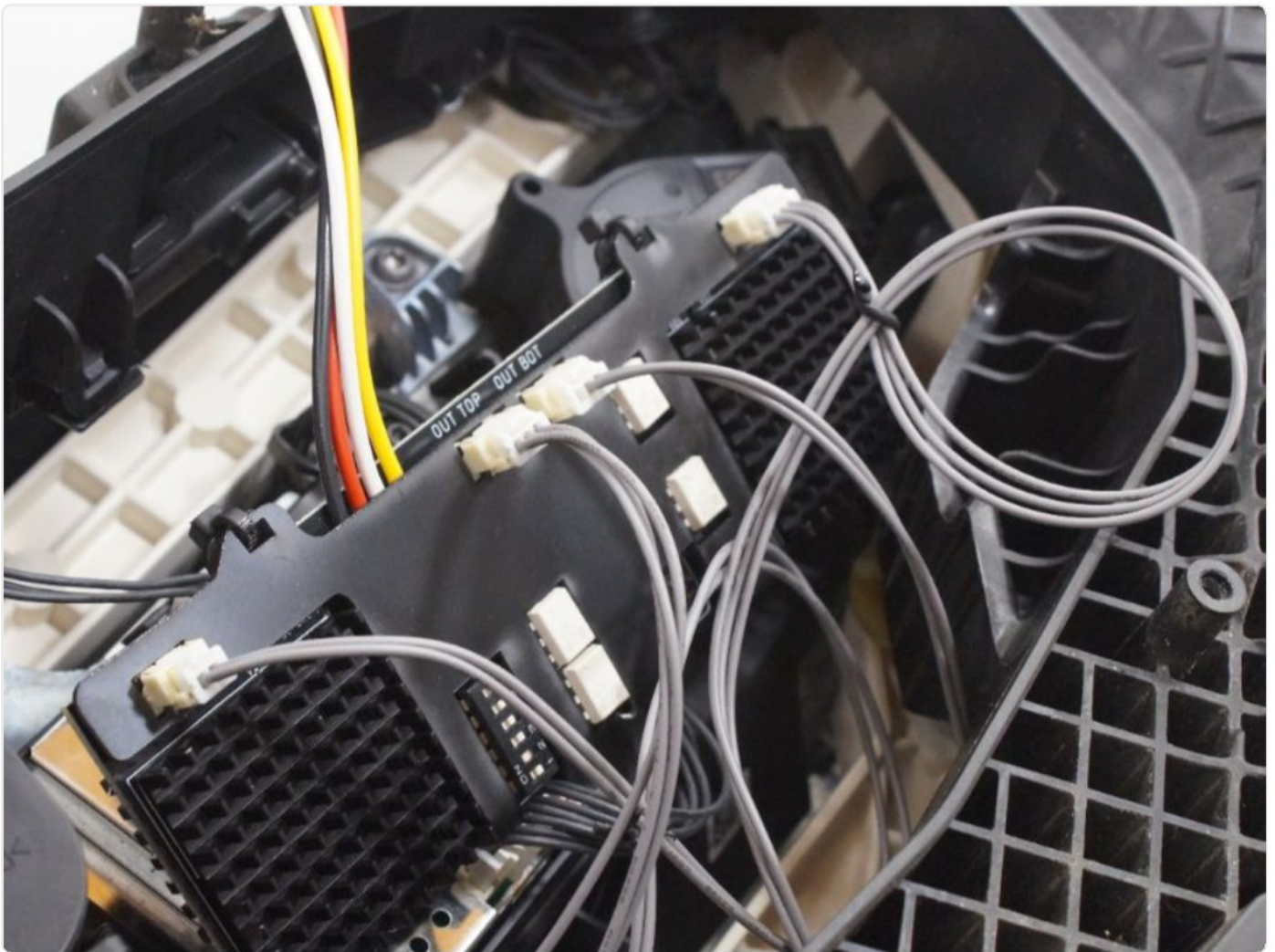
Connecting to the outer connectors on the controller

5. The two included female-female cables are connected to the dual color emitters and the cables are fed through the holes to the inside of the headlight.





6. These two cables are connected to the two middle connectors. Note that they are marked **OUT TOP** and **OUT BOT**.



Middle connectors: OUT TOP and OUT BOT

Connecting to the truck

The four coloured wires on the controller are connected to the truck as follows:

Colour	Function
Red	Plus (+)
Black	Minus (-)
Yellow	Strobe light
White	Change DRL colour

Important: make sure the supply cables that go into the headlight are mounted in a waterproof manner to avoid moisture in the headlight.

This is a good point to test that everything works. Test the DRL (both high and low brightness), the indicators, the colour change and the strobe light.

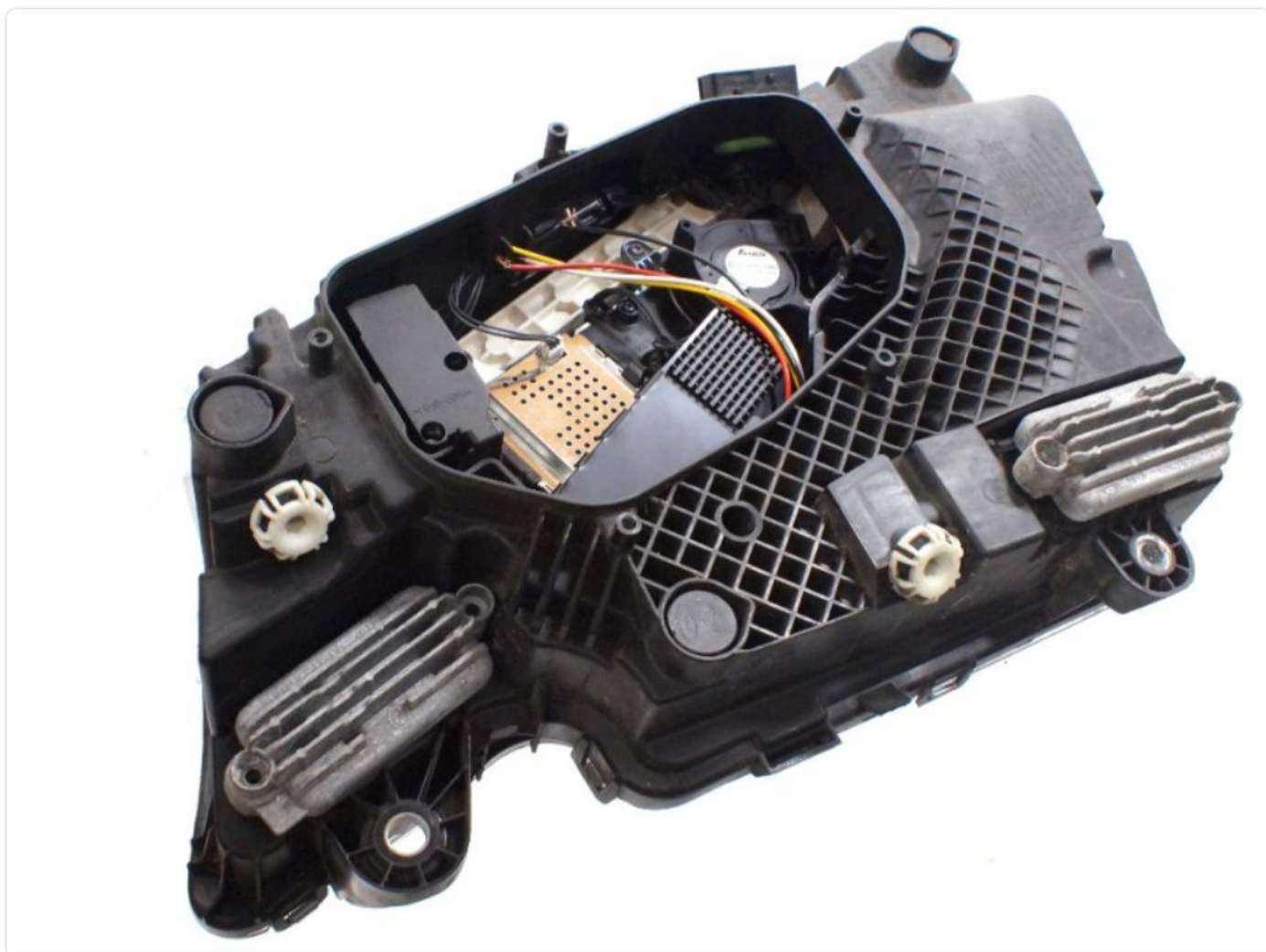
Setting the DIP switches

There are 6 DIP switches that let you adjust how the controller works:

Switch	Function
DIP 1 + DIP 2	Strobe mode (4 modes in total)
DIP 3	Split strobe (both stripes strobe simultaneously or split)
DIP 4	Dual color strobe (strobe both white and yellow)
DIP 5	Warm white DRL instead of xenon white
DIP 6	Indicator mode (only the bottom stripe or both stripes)

Finishing

Place the controller in the headlight so that it does not get squeezed by the plastic shield. Close the lamp and mount it back onto the truck.



End result